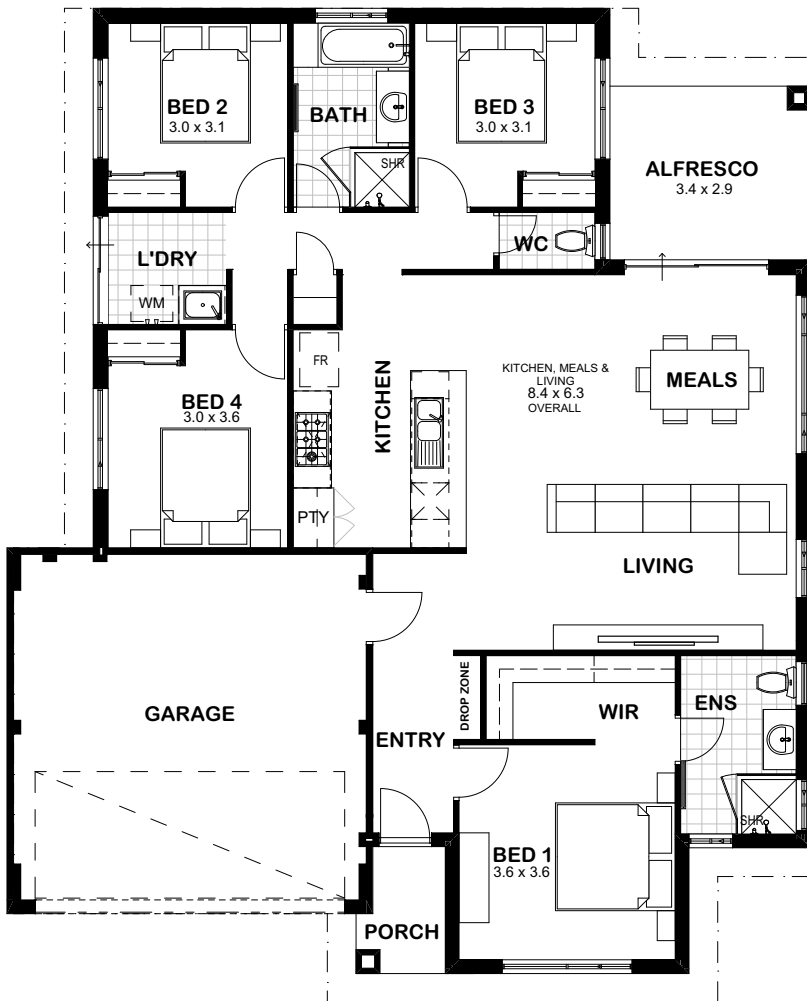




## The Alban | 189m<sup>2</sup>



### Perfect for entertaining!

Imagine inviting your friends and family over to enjoy your very own home. With an impressive open plan kitchen and dining area which overlooks your amazing alfresco, we know they'll be floored!



Essastone benchtops throughout



Lifetime structural guarantee



Quality flickmixer taps throughout



Colorbond roof, gutter, downpipes and fascia



NBN ready three point pack



900mm stainless steel appliances



Choice of architecturally designed elevations



Fixed price HIA lump sum building contract

Call today: **6169 0450**  
 Visit [momuwa.com.au](http://momuwa.com.au)