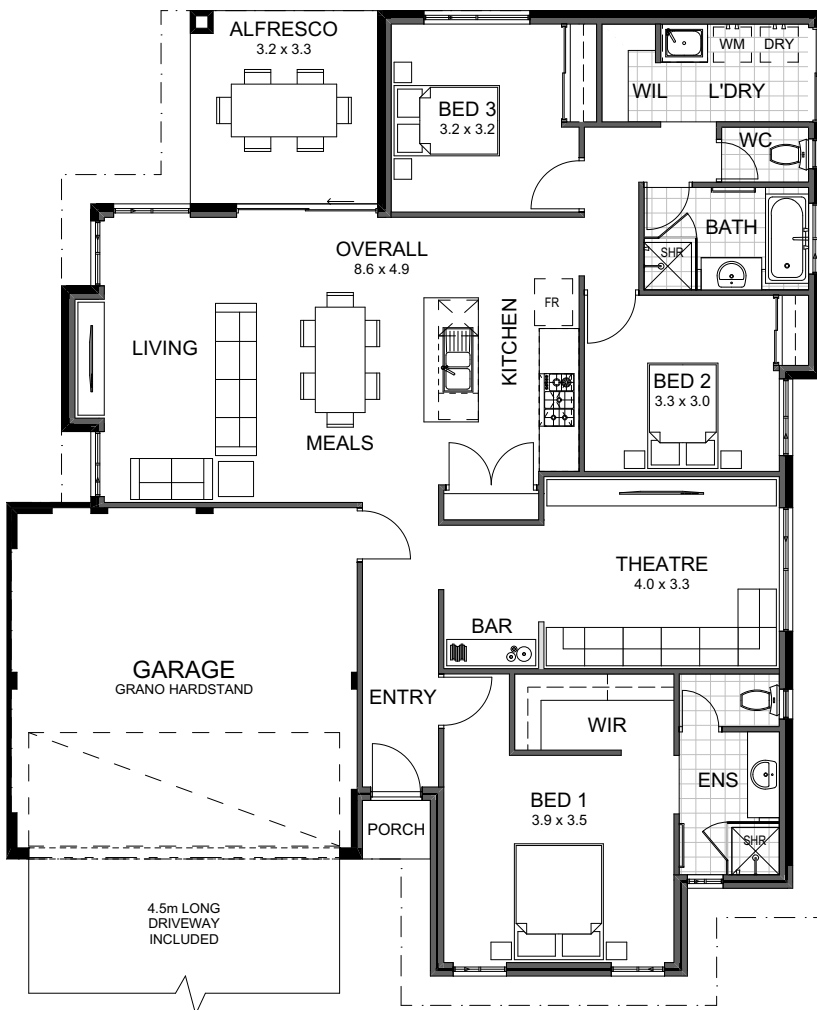




## The Wilston | 190m<sup>2</sup>



### Chock-full of inclusions, you'll love the Wilston.

Be the envy of your friends and family with this stylin' home! With smartly designed living areas, a luxe master suite, leading quality kitchen, and dedicated home theatre, this one's a sure-fire winner.



Essastone benchtops throughout



Lifetime structural guarantee



Quality flickmixer taps throughout



Colorbond roof, gutter, downpipes and fascia



NBN ready three point pack



900mm stainless steel appliances



Choice of architecturally designed elevations



Fixed price HIA lump sum building contract

Call today: **6169 0450**  
 Visit [momuwa.com.au](http://momuwa.com.au)